

# **Roadway Resurfacing Presentation**

Manchester Board of Mayor and Aldermen

February 3, 2026

City of Manchester, NH Department of Public Works

Tim Clougherty

Public Works Director

Owen Friend-Gray, PE

Deputy Public Works Director

Caleb Dobbins, PE

Highway Chief Engineer



# Good Condition



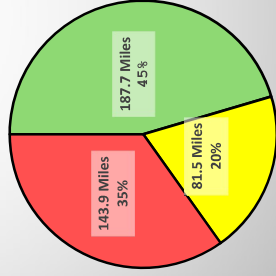
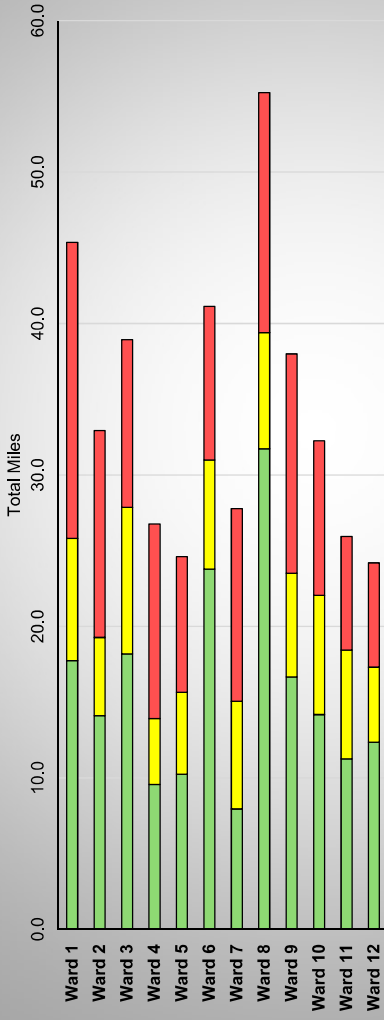
# Fair Condition



# Poor Condition



# Condition by Ward and City-wide-2025



413 Centerline  
Miles citywide

Good (71-100) Fair (56-70) Poor (0-55)

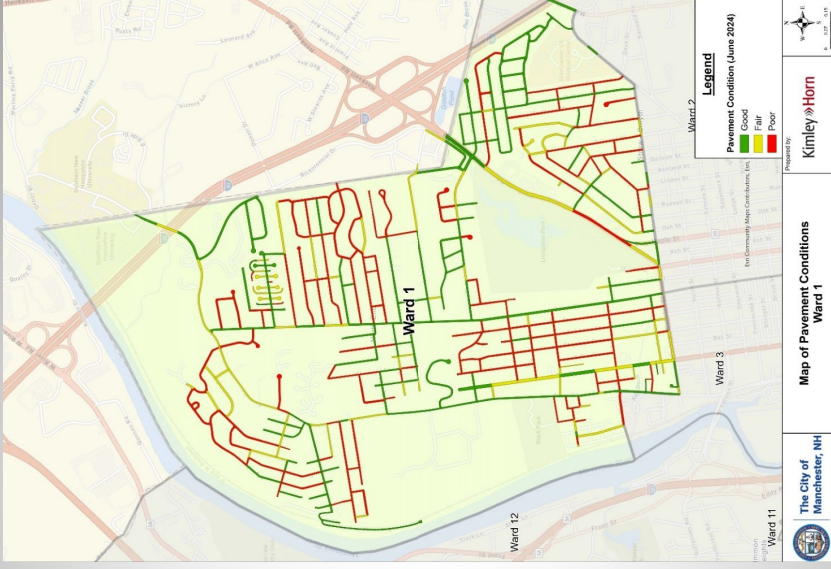


# **Pavement Condition Assessment**

- DPW contracted with Kimley-Horn for a City-wide review
- Included Pavement Condition Index (PCI) for all roadway segments.

## ***Example- Ward 1***

**Ward specific maps have been provided in packet**



## **Pavement Condition Index (PCI)**

- Measurement to rate pavement condition
  - Information collected on every roadway in 10' increments and is then compiled into larger roadway segments
  - Based on a scale from 0 (bad) to 100 (perfect)
  - Factors considered in the development of PCI
    - Ride quality
    - Pavement cracking
    - Pavement rutting
    - General distress



# **Paving Plan Development**

**Factors considered for selection of**

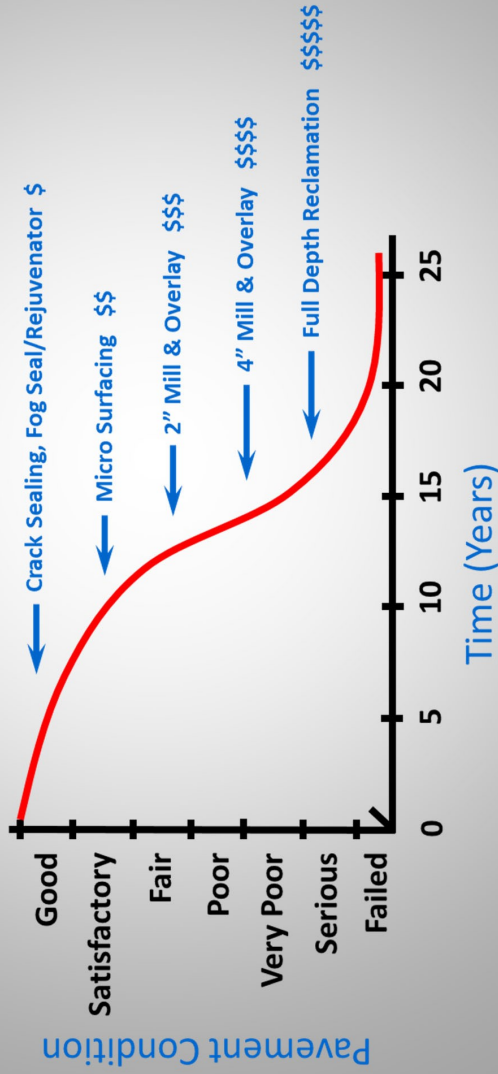
**Roadway Segments:**

- **Pavement condition index (PCI)**
  - **Traffic volume and type**
  - **Roadway connectivity**
    - **Access to services**
    - **Treatment timing**
      - **Funding**

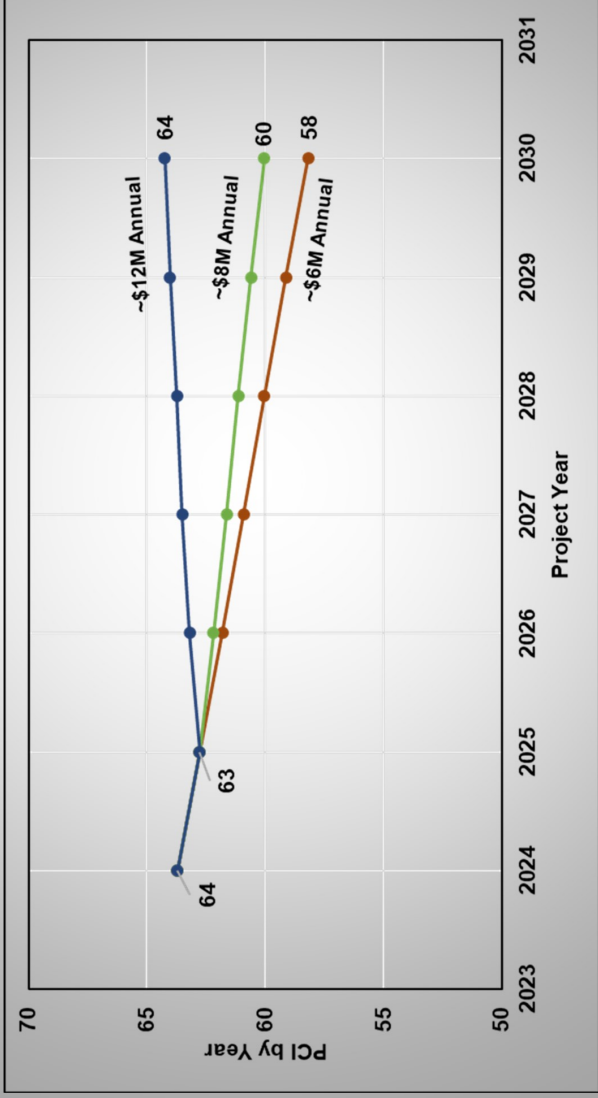


# Treatment Timing

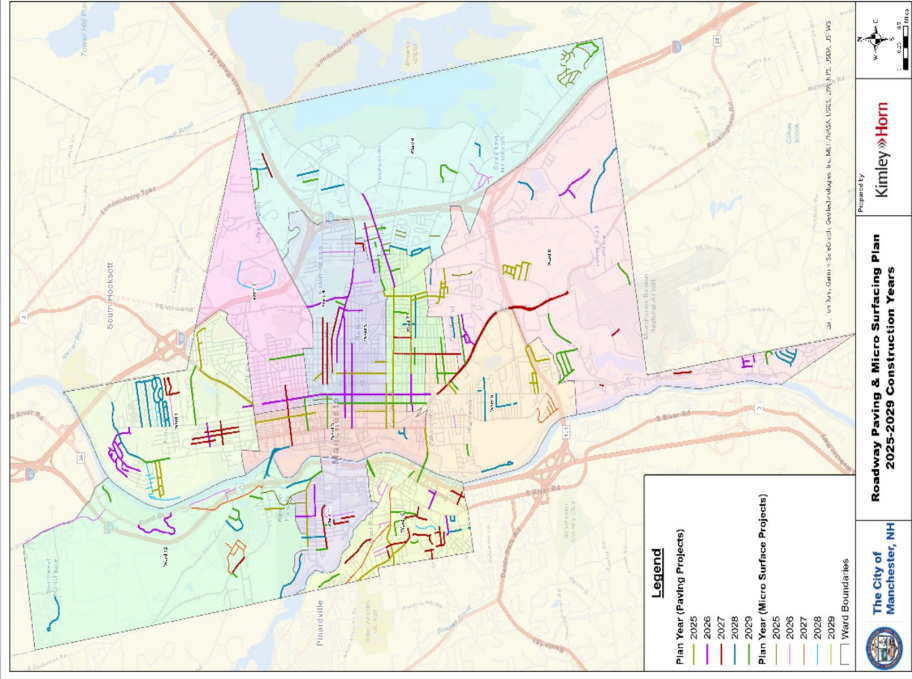
*Keep Your Good Roads Good*



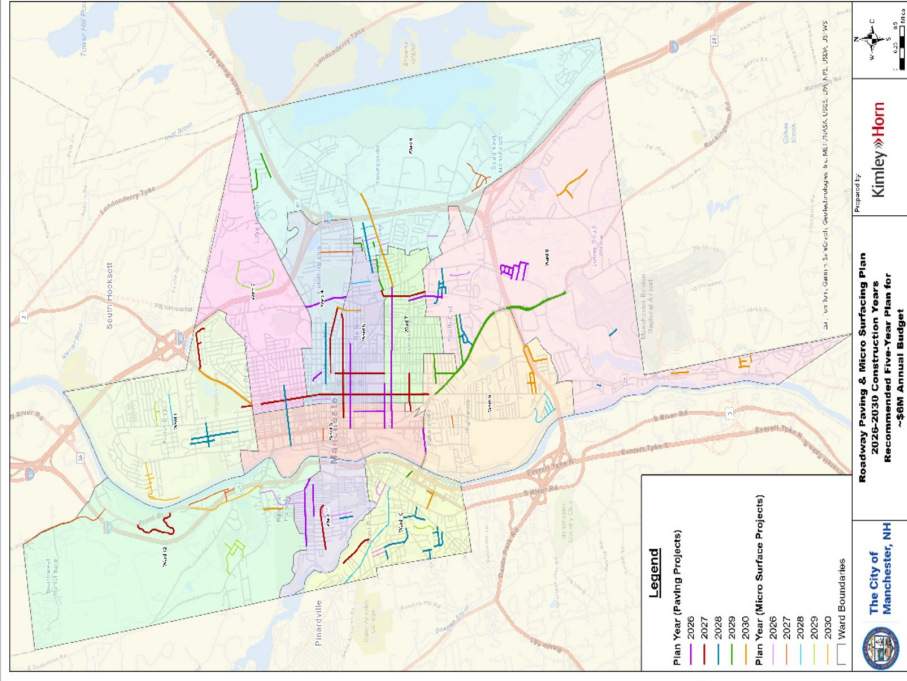
# Funding vs. Projected Pavement Condition



# 5 Year Roadway Paving Plan based on a \$12M/year funding level



# 5 Year Roadway Paving Plan based on a \$6M/year funding level



# **Implications of Reduced Funding**

## **Factors considered for selection of**

### **Roadway Segments:**

- Pavement condition index (PCI)**
  - Traffic volume and type**
  - Roadway connectivity**
    - Access to services**
    - Treatment timing**
      - Funding**





Tim Clougherty  
 Public Works Director  
 603-624-6444  
[tcloughe@manchesternh.gov](mailto:tcloughe@manchesternh.gov)

## Questions?

Owen Friend-Gray, PE  
 Deputy Public Works Director  
 603-624-6444  
[ofriend@manchesternh.gov](mailto:ofriend@manchesternh.gov)



Caleb Dobbins, PE  
 Highway Chief Engineer  
 603-624-6444  
[cdobbins@manchesternh.gov](mailto:cdobbins@manchesternh.gov)

